

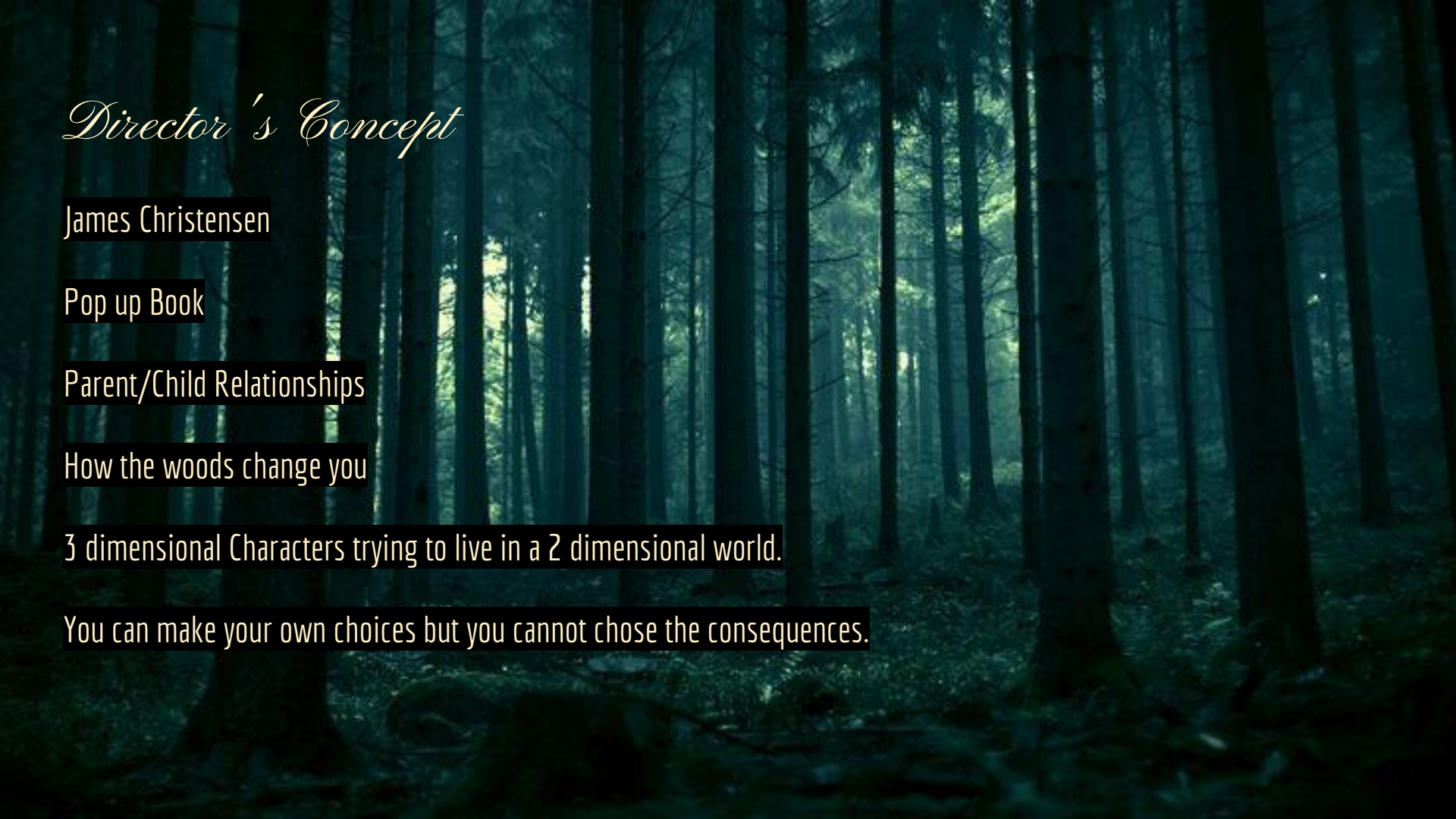


Into The Woods

Makeup Design Concept

Makeup Designer: Sarah Bult

Assistant Makeup Designer: Ellie Curtis



Director's Concept

James Christensen

Pop up Book

Parent/Child Relationships

How the woods change you

3 dimensional Characters trying to live in a 2 dimensional world.

You can make your own choices but you cannot chose the consequences.

The background of the entire image is a dark, atmospheric photograph of a forest. Tall, slender trees with dark bark stand closely together, their trunks creating a rhythmic pattern. The ground is covered in a thick layer of fallen leaves and low-lying vegetation, appearing in shades of brown and green. A soft, ethereal light filters through the canopy, creating a misty or foggy atmosphere. The overall color palette is muted, dominated by greens, browns, and greys, with some brighter highlights where light breaks through the trees.

Concept

These characters are forcing themselves into this storybook life. At points in the show they will have perfect hair not a bit out of place in the moments where they are perfectly in that life. When they face consequences for their actions and have non fairytale life realizations they will be less perfect, more messy, and look more like real people.

Concept



Real 3 dimensional people dropped into a 2 dimensional pop up book and they want nothing more than to fit into that doll-like fairytale perfection. But they are real people that faced with different challenges and they all discover that life isn't a fairytale.

I want to focus on the $\frac{2}{3}$ dimensional relationship in relation to their journey through the storybook. Some parts will be more real and eye opening to a specific character, other times they are forcing themselves into that doll-like fairytale perfection because that's what they have told themselves they have to be.

Concept



James Christensen hair silhouette, texture, shape of hair, and perfect.

Very expressive and fairy tale/storybook makeup

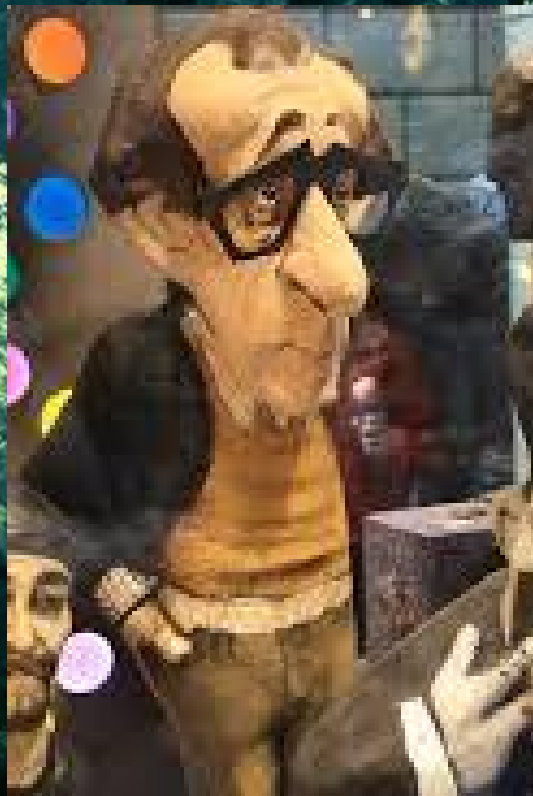
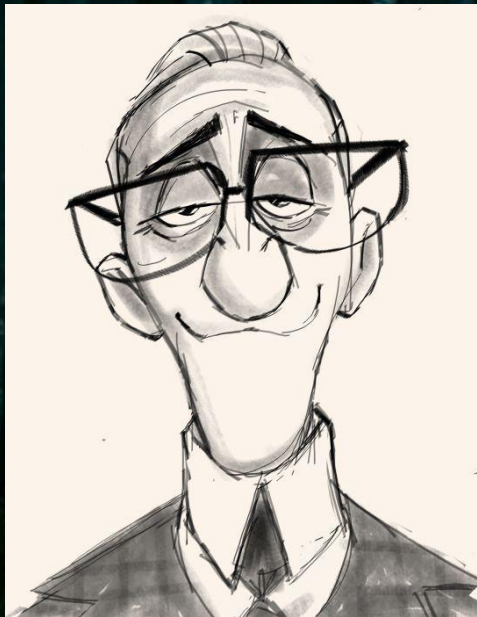
Each character is distinct and readable as that character

Hair accessories (if needed), two dimensional/storybook appearance and story book in nature. Ribbons, paper mache, etc.

The more ridiculous and fairy tale a character is the more perfect and storybook in nature their hair and makeup becomes.



Narrator



Cinderella



Cinderella's Mother



Cinderella's Father



Rapunzel



Cinderella's Prince



Rapunzel's Prince



The Steward



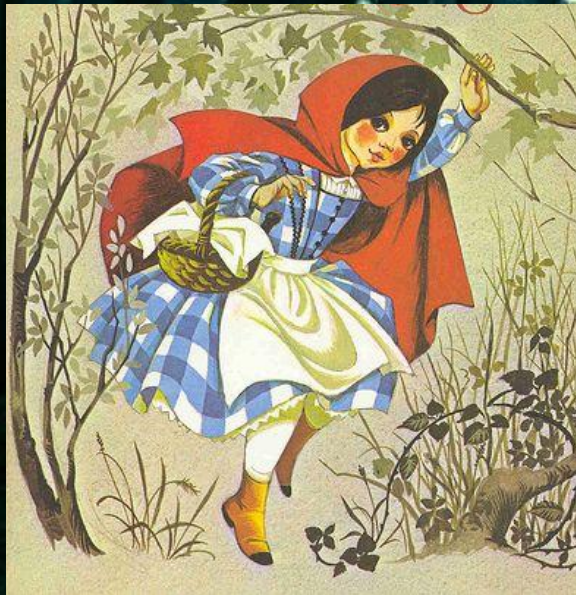
Mysterious Man



Wolf



Red Riding Hood



Granny



The Baker



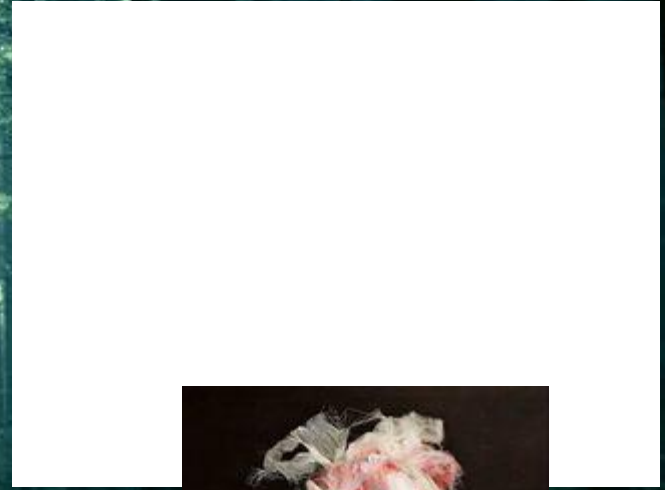
The Baker's Wife



Step Mother



Step Sisters - Lucinda and Florinda



Jack



Jack's Mother



The Witch



The Witch Transformation



Sleeping Beauty



Snow White





The End