



Importance of Being Earnest

MAKEUP & HAIR DESIGN CONCEPT

Makeup Designer: Sarah Bult
Asst. Designer: Ré Renshaw

Director's Concept

Light, Fluffy, Airy

Period Makeup & Hair

Characters are evident in the hair and makeup

Downton Abbey

Concept

Ice Cream

The characters are in an ice cream world where it is light, fluffy, and airy. They all have their own flavor/personality. The more grounded characters are going to be darker hair colors and the more fleeting and airy characters are going to have light hair and lighter elements.

Concept

Period Makeup & Hair

Frivolous Pastel Color Palette with some grounded darker variations

Hairstyles - Light soft look, not very taut

Hair colors are distinctive and deliberate

Minimal makeup to keep with the period

Ice Cream 'Toppings' - individual characteristics will be evident in individual lip color, eye shadow color, etc. Looking at ice cream flavors for color palettes.

Gwendolyn



Flavor - Fruit Sorbet

Dark Brown Hair

Gibson Hairstyle - very controlled
no wispy hair

Light pastel pink for eyeshadow

Pink for lip color

Thicker arched brows.

#FFCFA4

#FF947F

#D12041

Cecily



Flavor - Banana Split

Light pink neutral lip

Rosy Cheeks

Half up half down hairstyle

A close-up photograph of several flowers, primarily in shades of yellow and orange, with some green leaves visible. The flowers are in various stages of bloom, creating a textured and vibrant background.

Jack

Flavor - Rocky Road

Dark Brown Hair

Hair close to the head and front
raised in soft curl

Small moustache - very
fashionable

Algernon



Flavor - Chunky Monkey

Dark Brown Hair

Hair close to the head and front
raised in soft curl

Small moustache - very
fashionable



Lady Bracknell



Hair Color



Flavor - Cherry Cordial

Dark lip, thinned out

Age makeup

Arched eyebrows

Modified gay nineties hairstyle
and a gibson girl - back french
twist and the soft front of the
gibson

Miss Prism

Hair color & style



Flavor - Clotted Cream & Honeycomb

Gay Nineties Hairstyle with modified curls and bun

Light Grey Hair

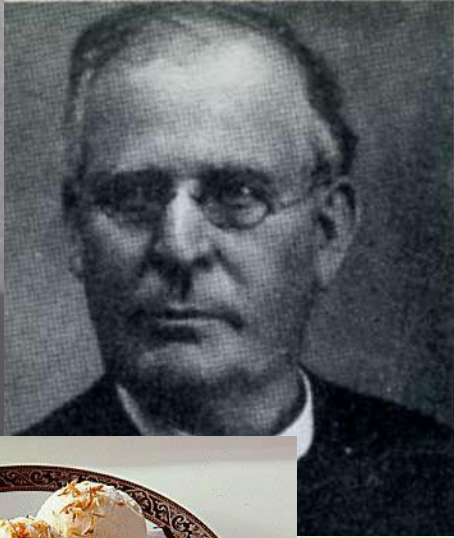
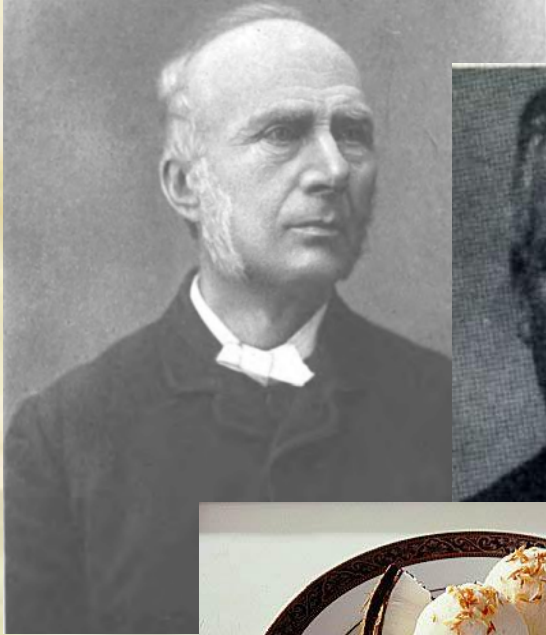
Old age makeup

Fuller & Rosy Cheeks

Lighter makeup colors

Spectacles & Hat

Reverend Chasuble



Flavor - Coconut

Age makeup

Salt and pepper greying hair

Sideburns/chops

Thick Brows



Lane

Flavor - Cookies n' Cream

Middle age makeup

Greying at the temples



Merriman



Flavor - Vanilla & Chocolate sauce

Old Age Makeup

White/Grey hair

Mustache
